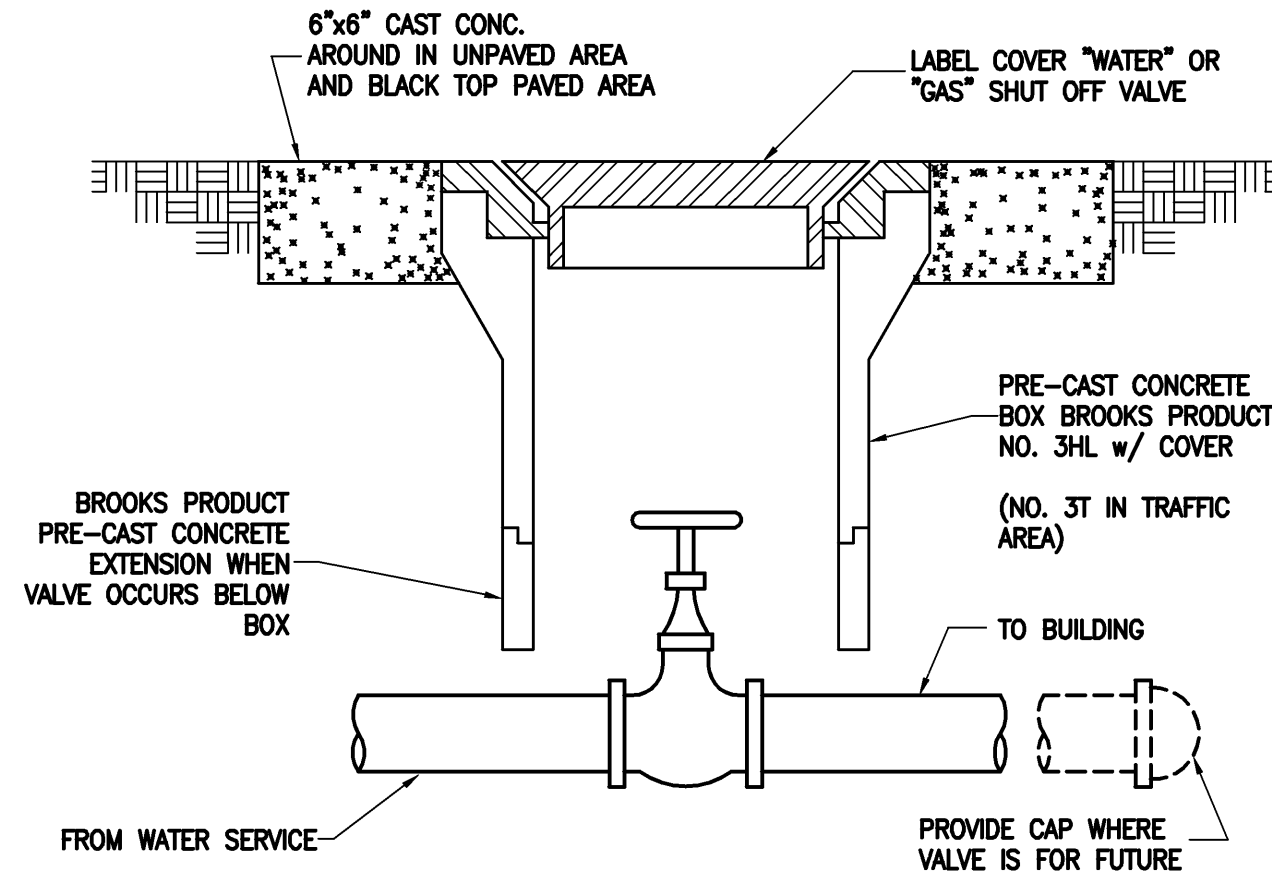


8 WALL CLEANOUT TYPICAL



5 SHUT-OFF VALVE IN YARDBOX

REDUCER SCHEDULE

REDUCER SIZE	AREA REQ'D	THRUST BLOCK SIZE
12X10	3.5 s.f.	1.9'x1.9'
12X8	6.3 s.f.	2.5'x2.5'
12X6	8.5 s.f.	2.9'x2.9'
10X8	2.8 s.f.	1.8'x1.7'
10X6	5.0 s.f.	2.2'x2.2'
8X6	2.2 s.f.	1.5'x1.5'

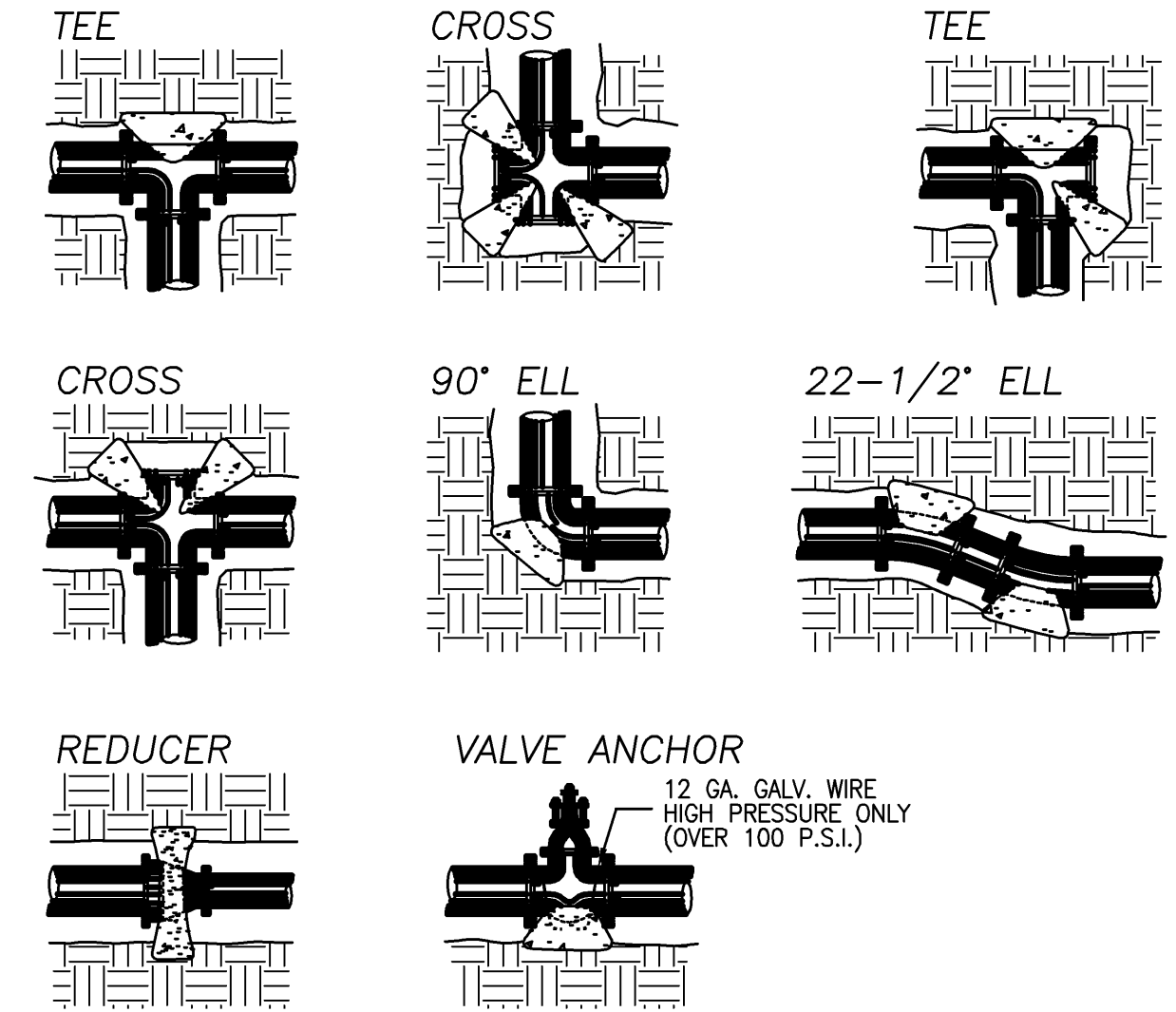
VALVE ANCHOR SCHEDULE

VALVE SIZE	AREA REQ'D	THRUST BLOCK SIZE
12	11.3 s.f.	3.4'x3.4'
10	7.9 s.f.	2.8'x2.8'
8	5.0 s.f.	2.2'x2.2'
6	2.8 s.f.	1.7'x1.7'

THRUST BLOCK SCHEDULE

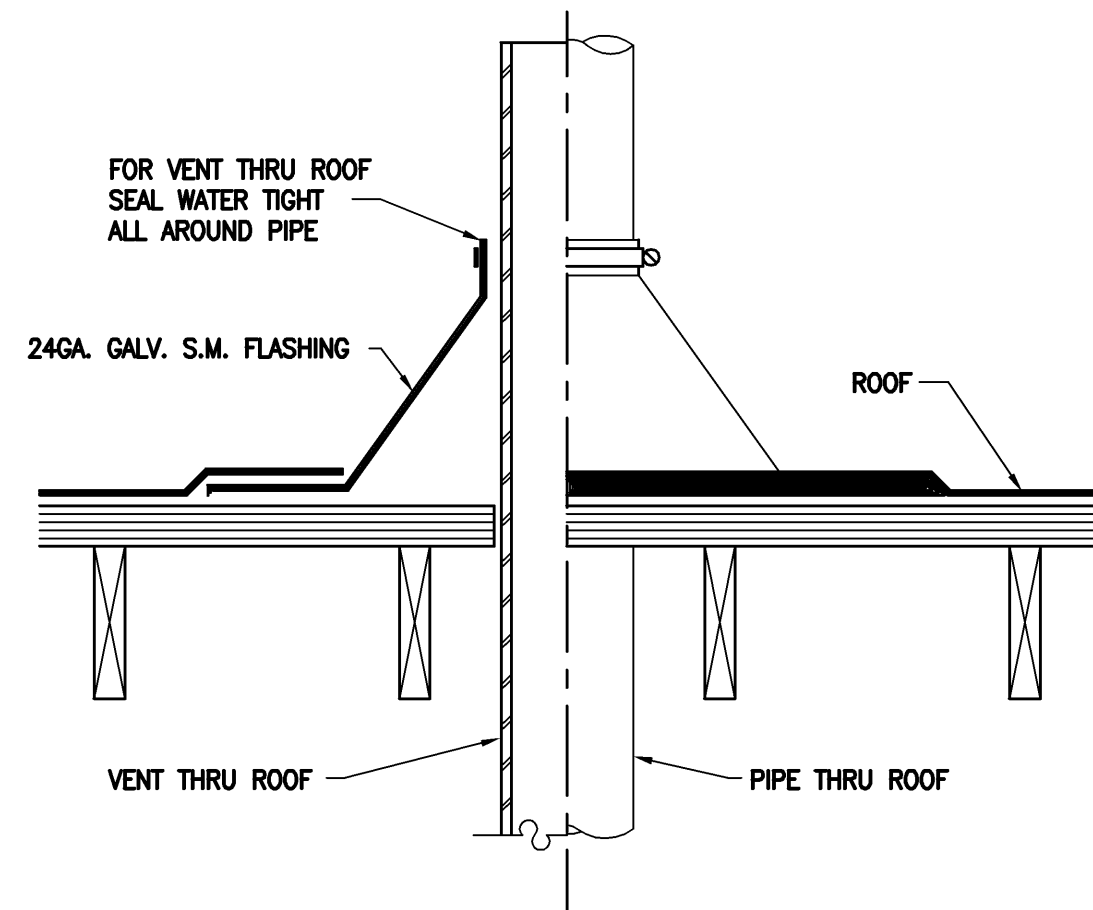
PIPE SIZE	BEARING AREA IN SQ. FT.			
	TEE OR PLUG	90° ELL OR HYDRANT	45° ELL	22-1/2° ELL
4"	2	2	2	1
6"	3	4	2	2
8"	5	7	4	2
10"	8	11	6	3
12"	11	16	8	4

NOTES:
ALL THRUST BLOCKS TO BE POURED AGAINST UNDISTURBED SOIL. CONCRETE SHALL BE PLACED BEHIND BELLS OF FITTINGS.
BEARING AREAS SHOWN IN TABLE ARE BASED ON ALLOWABLE SOIL PRESSURE OF 1500 P.S.F.
KEEP CONCRETE AWAY FROM BELLS.

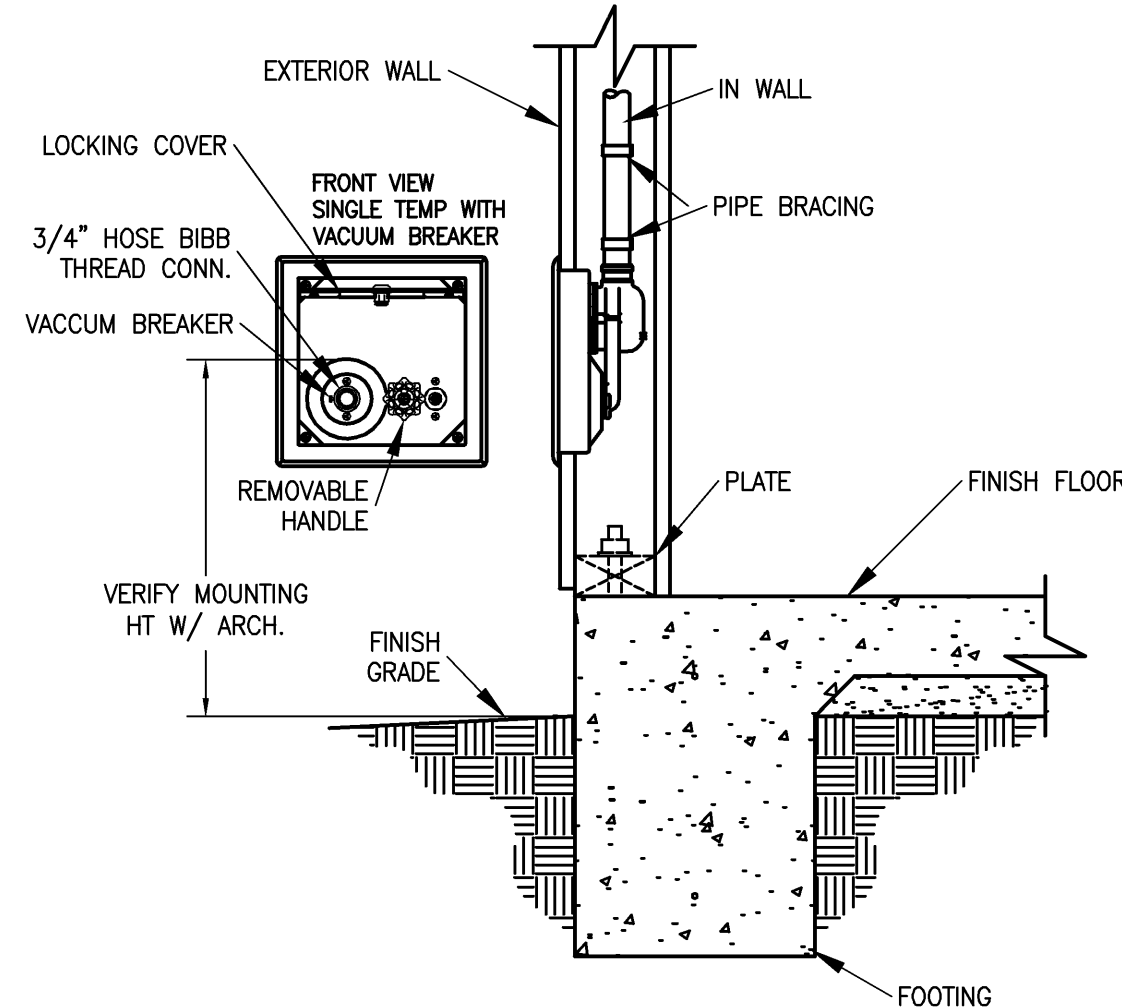


3 THRUST BLOCK LOCATIONS

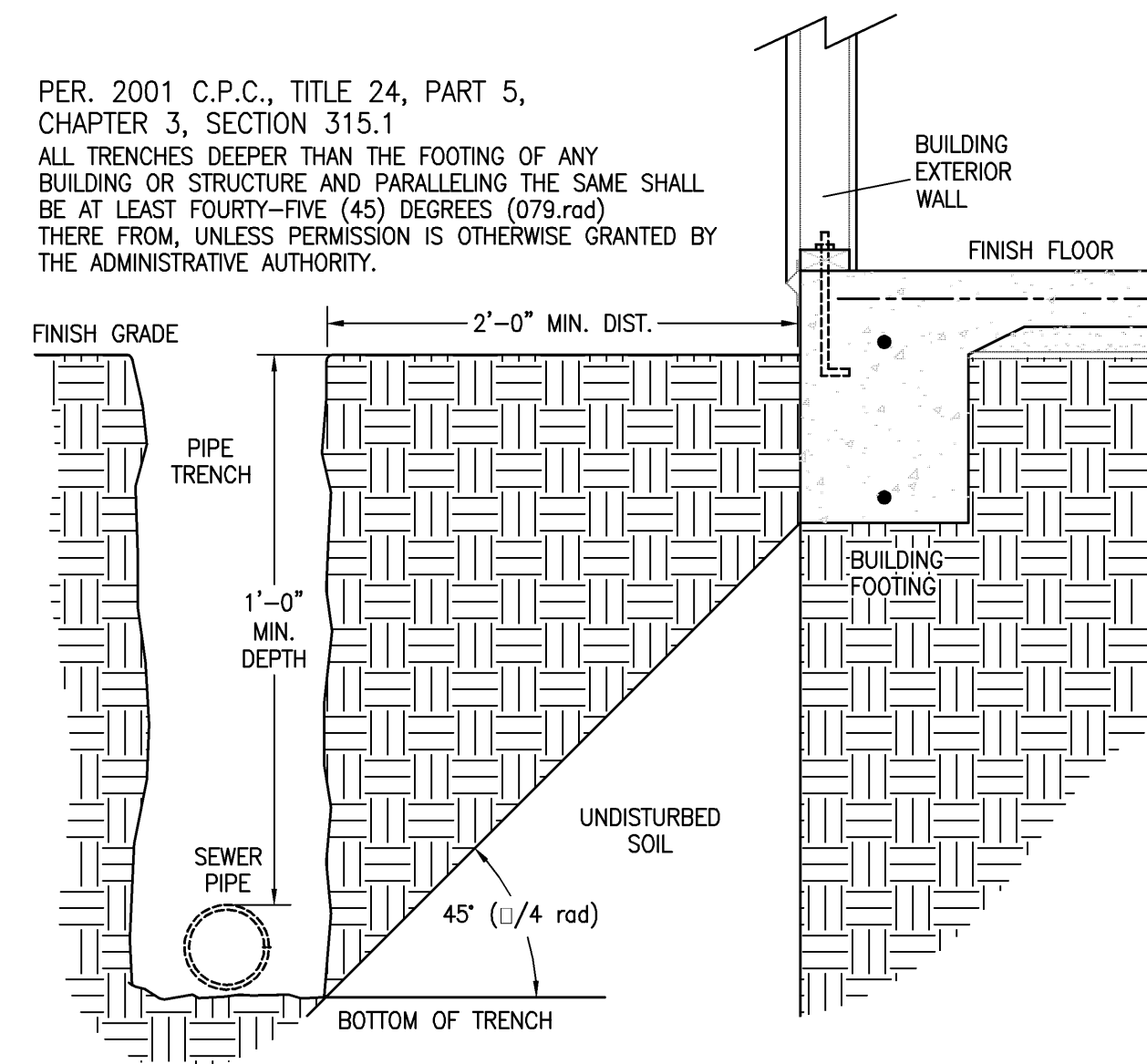
VENT THRU ROOF TO TERMINATE NOT LESS THAN (10) FEET FROM OR AT LEAST (3) FEET ABOVE ANY WINDOW, DOOR, OPENING, AIR-INTAKE OR VENT SHAFT, NOR LESS THAN (3) FEET IN EVERY DIRECTION FROM ANY LOT LINE, ALLEY AND STREET EXCEPTED.



9 VENT/PIPE THRU ROOF - TYP

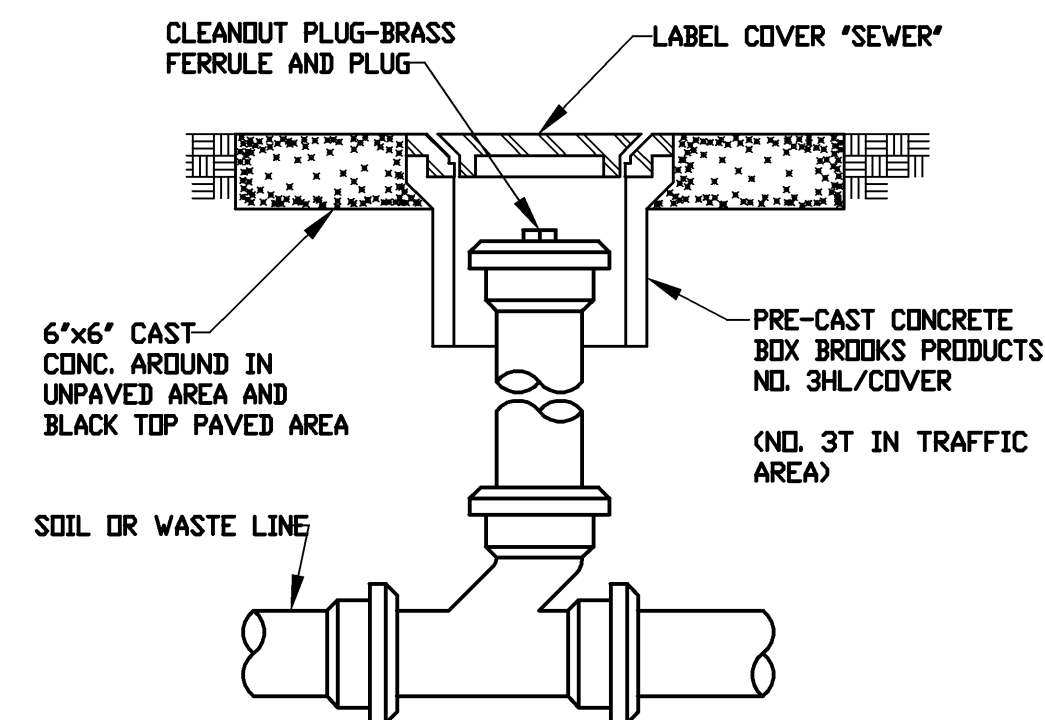


6 EXTERIOR HOSE BIBB - TYP.

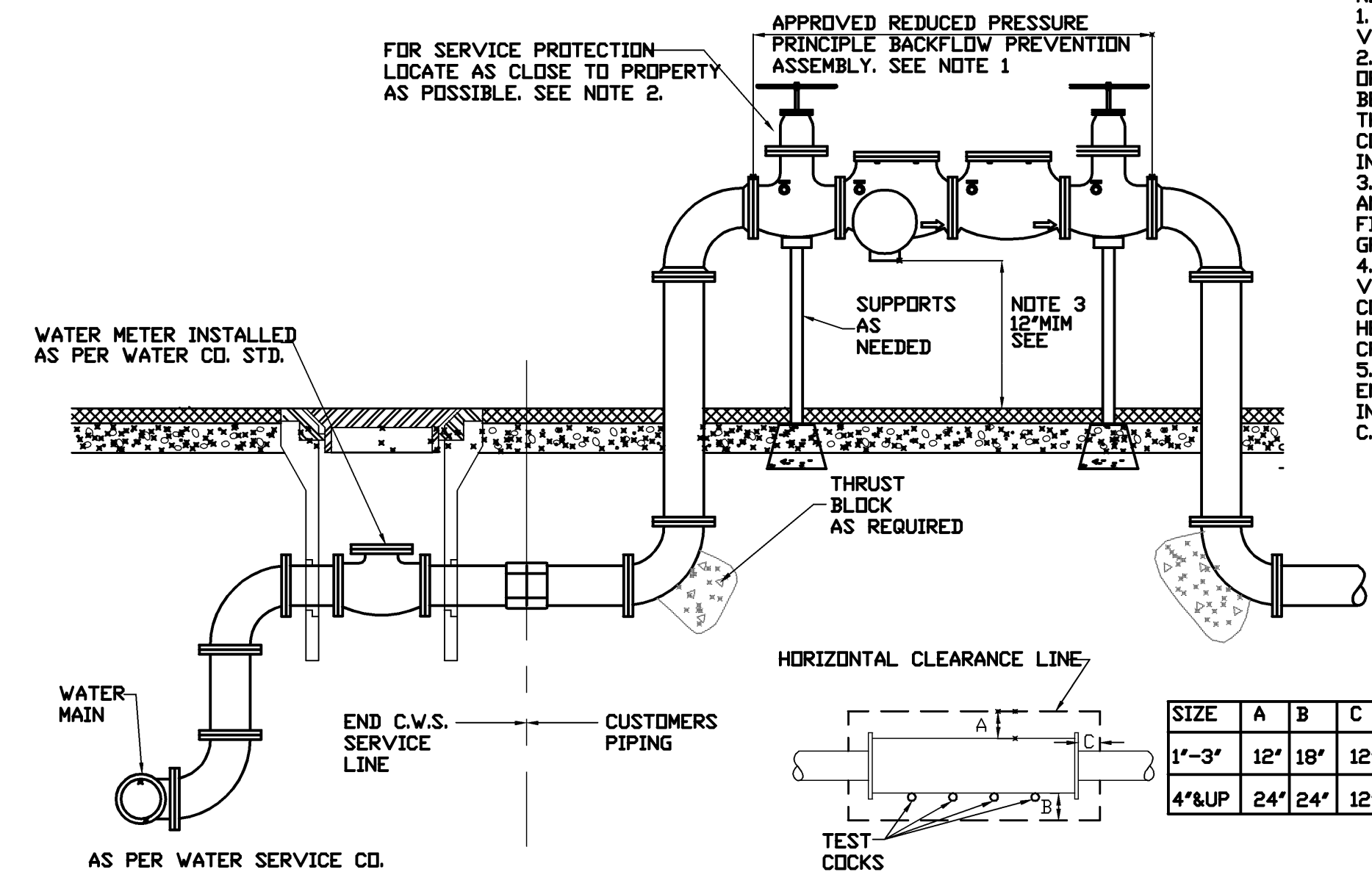


4 LOCATION OF PIPING TRENCH

NOTE:
1. FITTINGS FOR CLEANOUT SHALL BE SUITABLE FOR PIPE MATERIALS USED
2. 2-WAY COTG IS SIMILAR INSTALL 2 GOTG IN OPPOSING FLOW DIRECTIONS - TYP.



7 CLEAN-OUT TO GRADE



NOTES:
1. SEE C.V.S. APPROVED LIST OF VALVES.
2. THE LOCATION AND INSTALLATION OF THE APPROVED ASSEMBLY SHALL BE SUBJECT TO THE APPROVAL OF THE DISTRICT CROSS-CONNECTION CONTROL SUPERVISOR PRIOR TO INSTALLATION.
3. INSTALL UNIT A MINIMUM OF 12" AND A MAXIMUM OF 36" ABOVE FINISHED GRADE OF THE SURROUNDING GRADE NOT SUBJECT TO FLOODING.
4. PRESSURE/TEMPERATURE RELIEF VALVE INSTALLATION SHOULD BE CONSIDERED WHERE HOT WATER HEATING SYSTEMS OR EQUIPMENT MAY CREATE EXCESSIVE WATER PRESSURE.
5. APPROVED PROTECTIVE ENCLOSURES WHERE REQUIRED MAY BE INSTALLED IN ACCORDANCE WITH C.V.S. REQUIREMENTS.

1 BACKFLOW PREVENTER & WATER METER

P.E.
INCORPORATED
PASQUINI
ENGINEERING
908 H Street Suite 300
Bakersfield, Ca. 93304
Telephone: (661)-328-9600
Fax: (661)-328-9030

NO.	DATE

SHAILESH PATEL
TENANT IMPROVEMENT
301 CENTRAL AVE.
SHAFTER, CA.

THESE PLANS ARE NOT FOR CONSTRUCTION UNLESS A "WET STAMP & SIGNATURE" FROM BOTH THE ENGINEER OF RECORD AND A APPROVAL STAMP WITH A "WET STAMP & SIGNATURE" FROM THE LOCAL GOVERNING AGENCY ARE PRESENT.

DWG. BY	F.M.
CHK'D BY	
DATE	05/21/2010
JOB NO.	6148
FILE NO.	6148

EXP. 12/31/10

SHEET
P-2
OF SHEET

10