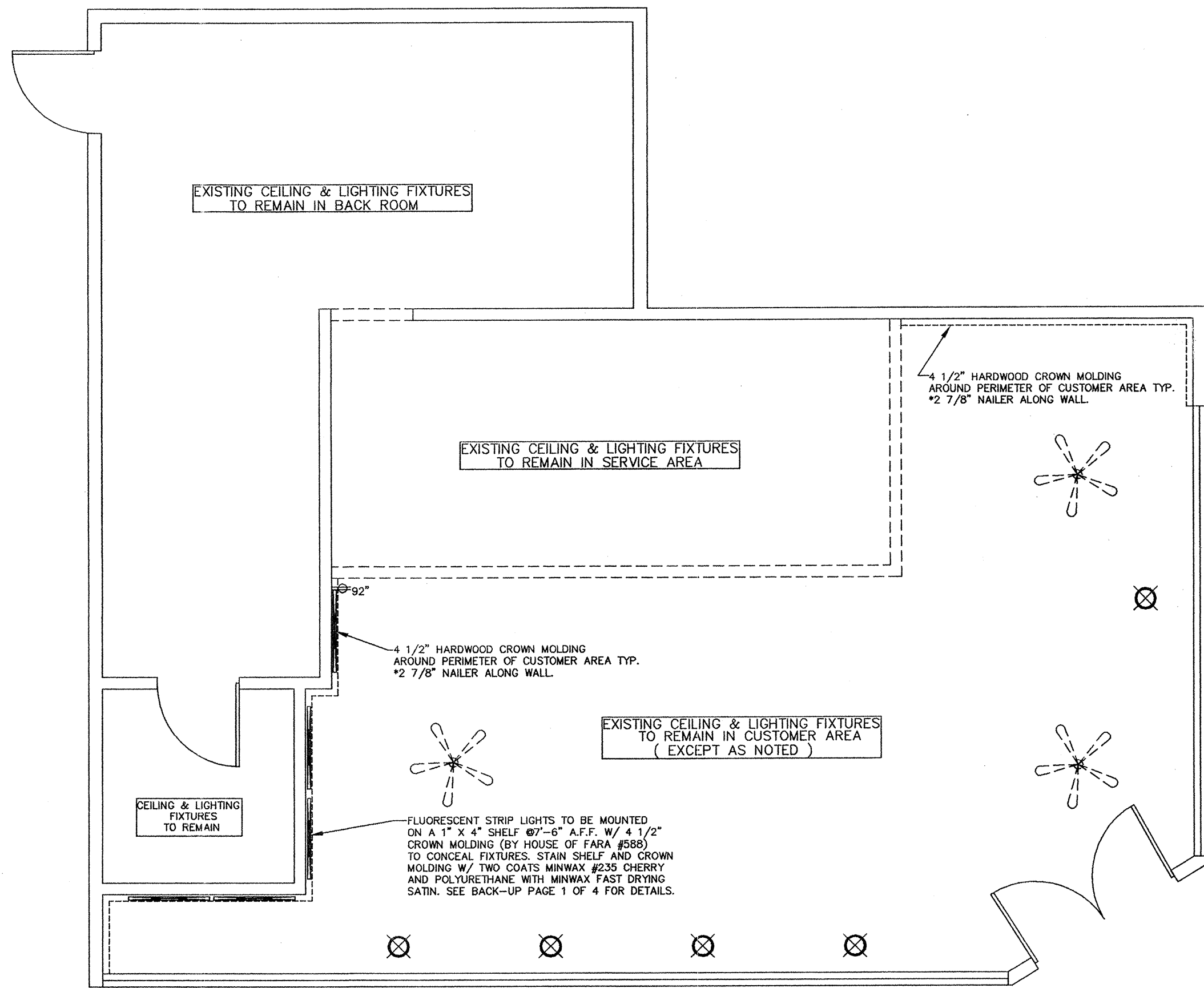


WALL FINISH PLAN



CEILING & LIGHTING PLAN

TUSCANY II DECOR CALCULATIONS	
NOTE: THE SUBWAY STORE DESIGN DEPARTMENT WILL NOT ACCEPT RESPONSIBILITY FOR ANY INACCURACIES. THE CALCULATIONS PROVIDED BELOW MUST BE VERIFIED BY THE G.C. AND FRANCHISE OWNER BEFORE ANY ORDER FOR THESE MATERIALS IS ACCEPTED AND PLACED.	
QUANTITIES	CALCULATION WORKSHEET
CUSTOMER AREA 1) (14) YARDS CITYSCAPE MURAL 2) (14) YARDS OF TUSCAN STUCCO WALL COVERING 3) (40) FEET OF UPPER DECORATIVE MOLDING 4) (40) FEET OF LOWER CHAIR RAIL MOLDING 5) (5) YARDS OF QUENTIN WALLCOVERING (NON-TEDLAR) (OR OPTIONAL BUTTERNUT BRICK WALLCOVERING) ABOVE CITYSCAPE MURAL. 6) (40) (OPTIONAL) FEET OF HARDWOOD CROWN MOLDING (AT CORNER WHERE WALL AND CEILING MEET) 7) (23) FEET OF HARDWOOD CROWN MOLDING (FINISH CAP ON STRIP LIGHTING SHELF) 8) (N/A) YARDS OF RED WALL COVERING 9) (N/A) YARDS OF QUENTIN WALLCOVERING (WITH TEDLAR COATING) (FOR 48" HIGH BANQUETTE WALL ONLY)	1) M/TS + S/M + 10% DIVIDED BY 3. 2) M/TS + T/S + R/TS 10% DIVIDED BY 3 3) M/TS + S/M + 10% 4) M/TS + T/S + R/TS 10% 5) (CEILING HEIGHT - 7'-6") X (M/TS + S/M + (Q/WC OR B/T IN CUSTOMER AREA ONLY)) + 5% DIVIDED BY 12 6) M/TS + S/M + R/TS (+ W/TS IF WINDOWS NOT TO CEILING) + 10% 7) TOTAL LENGTH OF WALLS WHERE FLUORESCENT STRIP LIGHTING TO BE INSTALLED + 10% 8) HEIGHT FROM TOP OF TUSCAN STUCCO WALL COVERING TO CEILING (36" A.F.F.) X R/TS + 1% DIVIDED BY 12 9) Q/WC + 10% DIVIDED BY 3. (CUSTOMER AREA ONLY)
SERVICE AREA 10) (N/A) 4' X 12' SHEETS FONT-HILL PEAR LAMINATE* 11) (N/A) 12' T-MOLDING STRIPS * 12) (N/A) YARDS OF BUTTERNUT BRICK TEXTURED WALL COVERING 13) (N/A) YARDS OF QUENTIN WALL COVERING (WITH TEDLAR COATING) 14) (1) RIGHT (1) LEFT VEGETABLE MOSAIC TILE 15) (N/A) (OPTIONAL) FEET OF COPPER CORNICE TRIM 16) (1) 4' X 12' SHEETS FONT-HILL PEAR LAMINATE (OPTIONAL: FOR SOFFIT APPLICATION)	10) FP/L + 5% DIVIDED BY 12 11) (FP/L ON 36" HIGH WALLS X 2) + (FP/L ON 48" HIGH WALLS X 3) + 5% DIVIDED BY 12 12) CEILING HEIGHT X B/T + 5% DIVIDED BY 12 13) CEILING HEIGHT X Q/WC + 5% DIVIDED BY 12 15) TOTAL LENGTH OF CUSTOMER SIDE OF HEADERWALL(S) OVER SERVICE AREA + 5% 16) 4' X 12' SHEETS FONT-HILL PEAR LAMINATE (OPTIONAL: FOR SOFFIT APPLICATION)
* CALCULATIONS ARE FOR FONT-HILL PEAR LAMINATE AND ALUMINUM T-MOLDING APPLIED TO 36" AND 48" HIGH WALLS. LAMINATE AND T-MOLDING, WHEN AFFIXED DIRECTLY TO DUKE FRONT COUNTER, IS SHIPPED READY TO INSTALL BY DUKE MANUFACTURING.	
NOTE: THESE CALCULATIONS DO NOT INCLUDE THE MATERIALS NEEDED TO DECOR THE AREA ABOVE OR BELOW THE WINDOWS.	

WALL FINISH LEGEND (TUSCANY II DECOR)					
*SEE TUSCANY II BACK-UP SHEET 1 OF 4 AND 2 OF 4 FOR PROPER INSTALLATION OF WALLFINISHES IN CUSTOMER AND SERVICE AREAS. (SEE TUSCANY SUPPLEMENTAL TILE BACK-UP SHEET WHEN APPLICABLE)					
SYMBOL	DESCRIPTION	MANUFACTURER	SUPPLY	INST.	NOTES:
(M)	SUBWAY MURAL	SUNGLO FABRICS	D.A.I.	G.C.	VINYL WALLCOVERING (UPPER CHAIR RAIL MOLDING AND QUENTIN OR BUTTERNUT BRICK WALLCOVERING AS REQUIRED)
(M)	TUSCAN STUCCO WALLCOVERING	SUNGLO FABRICS	D.A.I.	G.C.	VINYL WALLCOVERING (WITH LOWER CHAIR RAIL MOLDING)
(W)	WINDOW FRAME		G.C.	G.C.	PAINT SHERWIN WILLIAMS #SW6356 COPPER MOUNTAIN. (CITYSCAPE MURAL, UPPER CHAIR RAIL MOLDING AND QUENTIN OR BUTTERNUT BRICK WALLCOVERING AS REQUIRED)
(M)	TUSCAN STUCCO WALLCOVERING	SUNGLO FABRICS	D.A.I.	G.C.	VINYL WALLCOVERING (WITH LOWER CHAIR RAIL MOLDING AS REQUIRED)
(C)	CABINET/WALL LAMINATE	WILSONART	G.C.	G.C.	FONT-HILL PEAR (#10745-60) - INSTALL GRAIN HORIZONTALLY
(W)	WALL CAPS	G.C.	G.C.	G.C.	HARDWOOD PLANK (STAINED MINWAX #235 CHERRY AND POLYURETHANED WITH MINWAX FAST DRYING CLEAR SATIN)
(M)	MOSAIC TILE (RIGHT)	IMAGINE TILE	D.A.I.	G.C.	4 1/4" x 4 1/4" CERAMIC TILE. VEGETABLE GRAPHIC TILES FRAMED BY 1/4" (LIGHT CHERRY). SEE TUSCANY II SUPPLEMENTAL TILE BACK-UP SHEET FOR INSTALLATION.
(M)	MOSAIC TILE (LEFT)	IMAGINE TILE	D.A.I.	G.C.	4 1/4" x 4 1/4" CERAMIC TILE. VEGETABLE GRAPHIC TILES FRAMED BY 1/4" (LIGHT CHERRY). SEE TUSCANY II SUPPLEMENTAL TILE BACK-UP SHEET FOR INSTALLATION.
(C)	CERAMIC TILE	IMAGINE TILE	G.C.	G.C.	4 1/4" x 4 1/4" CERAMIC TILE. COLOR: 1A (LIGHT CHERRY). SEE TUSCANY II SUPPLEMENTAL TILE BACK-UP SHEET FOR INSTALLATION.
NOTE: ALL WOOD INTERIOR DOORS, UPPER & LOWER MOLDING & CROWN MOLDING TO BE STAINED W/ MINWAX #235 CHERRY AND POLYURETHANED W/ MINWAX FAST DRYING CLEAR SATIN.					
NOTE: PREFINISHED AND PREFRAMED COUNTER ENTRANCE IS AVAILABLE THROUGH PLYMOLD OR GLUE 2 PIECES OF 5/8" PARTICLE BOARD TOGETHER. SEE TUSCANY II BACK-UP SHEET #1 FOR FINISH OPTIONS.					

CEILING & LIGHTING LEGEND					
EXISTING 2' X 2' DROP CEILING TO REMAIN. PAINT SPLINES WHITE. OPTIONAL PAINTED CEILING TILE AND SPLINE COLORS (SPLINES MUST BE PAINTED THE SAME COLOR AS TILES): BLONDE PAINT (SHERWIN WILLIAMS #SW 6128) *CUSTOMER AREA ONLY* WHEAT GRASS PAINT (SHERWIN WILLIAMS #SW 6408) *CUSTOMER AREA ONLY*					
SYMBOL	DESCRIPTION	MANUF.	SUPPLY	ORDERED FROM	NO.
(X)	AMBER PENDANT LIGHT (LARGE)	TRUE TO FORM	SPECIALTY STORE LIGHTING	DAI	5
(F)	CEILING FAN	QUORUM	SPECIALTY LIGHTING GROUP	DAI	3
(S)	3' FLUORESCENT STRIP LIGHT	NORA LIGHTING	SPECIALTY LIGHTING GROUP	DAI	5
NOTES: LARGE SUSPENDED PENDANT FIXTURE (SW/AST/10-PL). USES (1) 15W FLUO. LAMP (MAXLITE ML515EA). PENDANT LIGHTS ARE PLACED AROUND THE PERIMETER OF THE RESTAURANT AND SHOULD BE INSTALLED AT A HEIGHT OF 6'-6" (198.1cm) FROM THE FLOOR TO THE BOTTOM OF THE FIXTURE. (A "PENDANT STEM KIT" IS AVAILABLE THROUGH SPECIALTY STORE LIGHTING FOR USE WITH HIGH CEILING). *RECOMMEND INSTALLING CUSTOMER SEATING BEFORE PENDANT LIGHTS TO ALLOW FOR PRECISE PLACEMENT OF FIXTURES OVER TABLE TOPS. CD-445 WITH 5 CHERRY FINISH BLADES. CAN BE INSTALLED AS DROP STYLE (WITH 6" OR 2" STEM) OR HUGGER (FLUSH) STYLE. MODEL # NULS-21. (1) F21T5 BULB. UP TO 10 NULS FIXTURES MAY BE CONNECTED TOGETHER ON A SINGLE 120V POWER CORD FEED. MOUNT ON 4" SHELF 6'-6" A.F.F. & FINISH W/ 4 1/2" CROWN MOLDING TO CONCEAL FIXTURES. REFER TO BACK-UP PAGE 1 OF 4.					

REMODEL

GENERAL NOTES:	
- CEILING HEIGHT IS 9' - ELECTRICAL OUTLET HEIGHTS MEASURED TO BOTTOM OF BOX. - ONE ELECTRICAL JUNCTION BOX TO BE LOCATED IN CEILING ABOVE EACH WINDOW - STORE DESIGNED WITH CONTOUR SEATING. - SHOWN ON PLAN AS SINGLES NOT GROUPS. - CUND MODEL SW3-PLUS WATER FILTRATION SYSTEM IS REQUIRED IN ALL NEW STORES THAT DISPENSE BEVERAGES. THE RECOMMENDED PLACEMENT FOR INSTALLATION IS MOUNTED TO SODA SYRUP RACK BY COCA-COLA. SECONDARY PLACEMENT OPTION IS MOUNTED ON THE BACKROOM WALL. THIRD INSTALLATION OPTION IS MOUNTING INSIDE THE FRONT BEVERAGE COUNTER WHEN SPACE LIMITATIONS OCCUR. REQUIRED: 1/2" INCOMING WATER LINE FEED WITH 1/2" BALL VALVE SHUTOFF AND 1/2" FPT CONNECTION. - MINIMUM 110 VOLT, 20 AMP ELECTRICAL SERVICE TO SUPPORT THE CARBONATOR AND WATER BOOSTER (MUST BE DEDICATED CIRCUIT). - SMARTCURVE STAND (MFR. DISPLAY-BOX) REQUIRED IN CUSTOMER AREA AT POINT OF ORDER (PREFERRED PLACEMENT). - 21 3/4" X 13 1/8" BASE, 56" (WITHOUT HEADER) OVERALL HEIGHT. - SECONDARY CHIP RACK IS REQUIRED IN THE CUSTOMER AREA. THE TWO AVAILABLE OPTIONS ARE: BASKET STYLE CHIP RACK AT THE POINT OF ORDER (PREFERRED PLACEMENT) OR PURSE RAIL MOUNTED CHIP RACK. (MOUNTED ON TOP OF THE PURSE RAIL) - EXIT LIGHTS INSTALLED BY G.C. PER LOCAL CODE. - EMERGENCY LIGHTS INSTALLED BY G.C. PER LOCAL CODE. - EXTINGUISHERS, SMOKE AND FIRE DETECTION SYSTEMS INSTALLED BY G.C. PER LOCAL CODE. - LABOR & MATERIAL SUPPLIED BY G.C. UNLESS OTHERWISE NOTED. - ALL DIMENSIONS TO BE VERIFIED BY G.C. ON SITE. - DECOR SPECIFICATIONS ARE TO BE SUBWAY'S "TUSCANY II" SCHEME. - EXISTING FLOOR FINISH TO REMAIN.	

REVISION:	BY:	DATE:

STORE MUST BE CONSTRUCTED AS DESIGNED IN THESE FLOOR PLANS SUBJECT TO FEDERAL, STATE AND LOCAL LAWS. RECIPIENT IS RESPONSIBLE FOR ENSURING COMPLIANCE WITH ALL LAWS. IF MODIFICATIONS ARE NECESSARY, PLEASE CONTACT THE FWH STORE DESIGN DEPARTMENT FOR WRITTEN APPROVAL OF THE REQUIRED CHANGES.

THIS DRAWING IS FURNISHED BY FWH ON BEHALF OF DOCTORS ASSOCIATES INC. (DAI) DBA SUBWAY. RECIPIENT MUST DETERMINE IF THIS DRAWING MUST BE SUBMITTED TO A LICENSED ARCHITECT OR SIMILAR PROFESSIONAL UNDER FEDERAL, STATE OR LOCAL LAW. ANY CHANGES MUST BE APPROVED BY DAI.

DO NOT SCALE DRAWING. WRITTEN DIMENSIONS TAKE PRECEDENCE OVER SCALED DIMENSIONS AND SHALL BE VERIFIED IN THE FIELD BY THE GENERAL CONTRACTOR AND/OR FRANCHISEOWNER. ANY DISCREPANCY IN DIMENSIONS SHALL BE BROUGHT TO THE IMMEDIATE ATTENTION OF DAI'S WEB DEVELOPMENT AGENT OR DESIGNATED FIELD REPRESENTATIVE.

THE GENERAL CONTRACTOR AND EACH SUB-CONTRACTOR SHALL MAKE HIS OWN INSPECTIONS AND MEASUREMENTS. FWH AND DAI SHALL NOT BE HELD RESPONSIBLE FOR THE ACCURACY OF DIMENSIONS AND FOR ERRORS AND OMISSIONS IN THE DRAWINGS IF WRITTEN CONFIRMATION HAD NOT BEEN RECEIVED BY THE FWH STORE DESIGN DEPARTMENT.

THIS DRAWING AND THE INFORMATIONAL CONTENT HERE OF IS THE CONFIDENTIAL PROPERTY OF DAI OF AND IS PROVIDED SOLELY FOR THE USE OF AUTHORIZED FRANCHISEES. THEIR AGENTS AND CONTRACTORS. RECIPIENT AGREES NOT TO REPRODUCE, COPY, USE OR TRANSMIT THIS DRAWING AND/OR ITS INFORMATIONAL CONTENT, IN WHOLE OR IN PART, OR TO ALLOW SUCH ACTION BY OTHERS, FOR ANY PURPOSE, EXCEPT WITH THE WRITTEN PERMISSION OF DAI OR FWH ACTING ON BEHALF OF DAI. RECIPIENT FURTHER AGREES TO SURRENDER THIS DRAWING AND ANY PERMITTED COPIES HEREOF UPON DEMAND.



WORLD HEADQUARTERS
325 BIC DRIVE
MILFORD, CT 06461
(203) 877-4281
(800) 888-4848

LOCATION:

STORE # 32111
20 WEST MAIN ST
VISTA, CA

FRANCHISEE:

KUMAR

DEVELOPMENT AGENT:

MARWAHA

DATE:

JULY 22, 2010

DESIGNED BY:

DAVE MILLER

DRAWN BY:

D.G.M.

REVIEWED BY:

(Signature)

SCALE: 1/4" = 1'-0"

SHEET #:

2 OF 2