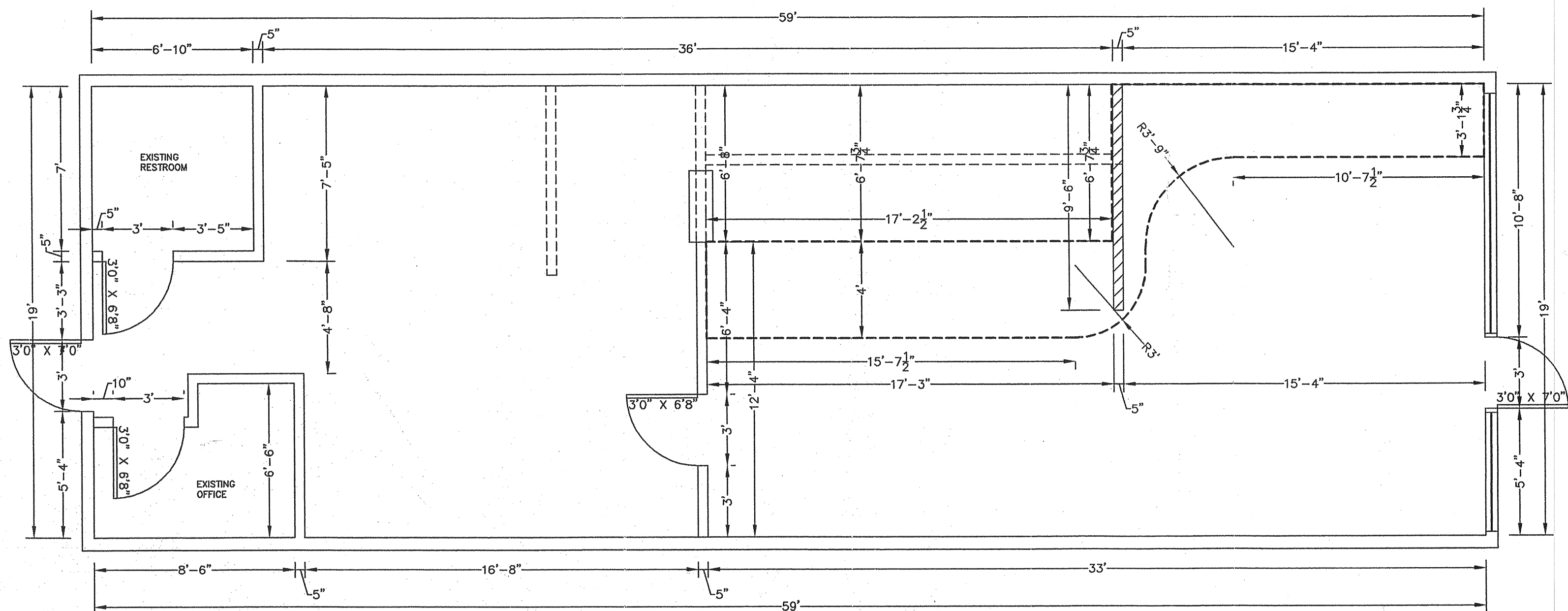


1 FLOOR PLAN
SCALE 1/4"=1'-0"

FURNITURE AND EQUIPMENT LEGEND

#	ITEM	MANUFACTURER	ORDERED FROM	QTY	DESCRIPTION
CUSTOMER AREA					
1	BOOTH SEATING	PLYMOLD	DAI	3	(X)4-SEATER ()3-SEATER ()2-SEAT HANDICAP ()4-SEAT HANDICAP. ()CONTOUR (X)COLORCOURT. BENCH AND TABLE TOP (WITH BLACK DURA-EDGE) COLOR: FONT HILL PEAR LAMINATE.
4A	30" X 42" TABLE	PLYMOLD	DAI	1	30" HIGH W/ (1) VERTICAL TABLE LEG AT EACH OF THE 4 CORNERS. FONT HILL PEAR LAMINATE WITH BLACK DURA EDGE.
4B	20" X 24" TABLE	PLYMOLD	DAI	4	30" HIGH W/ FREESTANDING 22" X 22" CROSS BASE. FONT HILL PEAR LAMINATE WITH BLACK DURA EDGE.
5A	30" ROUND BAR HEIGHT TABLE	PLYMOLD	DAI	2	42" HIGH W/ FREESTANDING 30" X 30" CROSS BASE. FONT HILL PEAR LAMINATE WITH BLACK DURA EDGE.
6A	CHAIR	PLYMOLD	DAI	12	QUEST CHAIR W/ UPHOLSTERED SEAT OR DUR-A-SEAT TO BE ORDERED IN THE FOLLOWING COLORS: CROQUIS, SPICE AND SLATE. FRAME COLOR IS BLACK WRINKLE.
6B	BAR HEIGHT STOOL	PLYMOLD	DAI	6	QUEST STOOL W/ UPHOLSTERED SEAT OR DUR-A-SEAT TO BE ORDERED IN THE FOLLOWING COLORS: CROQUIS, SPICE AND SLATE. FRAME COLOR IS BLACK WRINKLE.
8A	TRASH RECEPTACLE	PLYMOLD	DAI	1	(X)25" X 25" SINGLE HOLE TRASH UNIT OR ()18 5/8" X 18 5/8" SPACE SAVER TRASH UNIT. BLACK DURA EDGE TRASH RECEPTACLE W/FONT HILL PEAR LAMINATE FINISH.
9A	SODA FOUNTAIN	CORNELIUS	DAI	1	DEDICATED 115V, 20 AMP DUPLEX OUTLET (NEMA 5-20R) W/IN 3 FEET, 3 INCH OR LARGER FLOOR DRAIN W/IN 3 FEET (EQUIPMENT INSTALLED BY COKE).
9B	TEA/COFFEE BREWER	BUNN-O-MATIC CORP.	DAI	1	DEDICATED 120V, 15 AMP DUPLEX OUTLET (NEMA 5-15P) W/IN 3 FEET, PLUMBING: 20-90 PSI. MODEL SUPPLIED WITH 1/4" MALE FLARE FITTING, MIN. 10PM WATER FLOW.
10	BEVERAGE DESTINATION CENTER	DUKE MANUFACTURING	DAI	1	()RH (X) LH BEVERAGE PLACEMENT ()48" ()60" (X)72" ()84" ()96" ()108" ()120". STAINLESS STEEL TOP. FONT HILL PEAR LAMINATE FINISH. INSTALLED BY G.C.
13A	WALL ART-VERTICAL	SUNGLO FABRICS	DAI	6	23" X 50" WALL HUNG PRINT(S) ON STYRENE-FACED FOAMBOARD FRAMED IN BLACK METAL. MOUNTING HARDWARE INCLUDED. EIGHT DIFFERENT PRINT IMAGES AVAILABLE.
13B	WALL ART-SQUARE	SUNGLO FABRICS	DAI	2	26" X 26" WALL HUNG PRINT(S) COLOR PHOTOS DOUBLE MATTED IN A BLACK WOODEN FRAME. MOUNTING HARDWARE INCLUDED. EIGHT DIFFERENT PRINT IMAGES AVAILABLE.
16	WALL PLANT	GRACE DESIGNS	DAI	3	WALL HUNG SILK PLANT. MOUNTING BRACKET TO BE HUNG 15" BELOW THE TOP OF THE UPPER DECORATIVE MOLDING (REFER TO TUSCANY II BACK-UP SHEET #1)
17	INTERIOR DOOR	LOCAL	G.C.	1	SOLID CORE HARDWOOD DOOR (SLAB OR PANEL CONSTRUCTION) STAIN MINWAX #235 CHERRY & POLYURETHANE W/ MINWAX FAST DRYING SATIN. METAL FRAME (PAINT SHERWIN WILLIAMS #SW6305 COPPER MOUNTAIN) LEVER HANDLE. INSTALLED BY GC.
SERVICE AREA					
19	FRONT COUNTER	DUKE MANUFACTURING	DAI	1	TOTAL LENGTH 17'-2" () LH (X) RH .25" HOT FOOD UNIT (2) 60" COLD PAN UNIT .61" CASH UNIT. INSTALLED BY G.C. ULS APPROVED. ELECTRICAL CONNECTIONS AND WIRING TO LOCAL AND STATE CODE REQUIREMENTS AS DETERMINED BY G.C. OR ELECTRICIAN.
21	COOKIE DISPLAY CASE	ADVANCED DISPLAYS IN PLASTICS, INC.	DAI	1	DISPLAY CASE ON TOP OF SUB-WRAP AND NAPKIN RISER. MADE OF CLEAR ACRYLIC.
24	SUBSHOP 2000 P.O.S.	WIKOS SYSTEMS/HELL/SERIAL/PC-RIS	DAI	1	PC BASED POINT OF SALE SYSTEM. REQUIRES DEDICATED POWER SOURCE WITH ISOLATED GROUND TO BREAKER.
26	HAND SILK	DUKE MANUFACTURING / LOCAL	DAI/G.C.	1	WALL MOUNTED, 10" X 14" X 6", OR SEE OWNER FOR SPECS. SUBJECT TO HEALTH CODE APPROVAL.
29	MENUBOARD	VCS / TRANSLITE SONOMA	DAI	5	MENUBOARD: (4) 12" X 4" (1) 12" X 2" LIGHT FIXTURES, (1) 12" () 14" () 18" () 24" () 36" () 48" () 60" () 72" LENGTH. STAINLESS STEEL TOP. FONT HILL PEAR LAMINATE FINISH. INSTALLED BY G.C.
32	BACK COUNTER	DUKE MANUFACTURING	DAI	1	() 24" () 36" () 48" () 60" () 72" LENGTH. STAINLESS STEEL TOP. FONT HILL PEAR LAMINATE FINISH. INSTALLED BY G.C.
33	REFRIGERATED BACK COUNTER	DUKE MANUFACTURING	DAI	1	(X) 48" LENGTH. () 60" LENGTH. BACK COUNTER WITH UNDER-COUNTER REFRIGERATOR. STAINLESS STEEL TOP. FONT HILL PEAR LAMINATE FINISH. INSTALLED BY G.C.
BACKROOM AREA					
48	FREEZER	NORLAKE	DAI	1	() 8' X 6' () 6' X 8' (X) 6' X 6' () 5' X 6' () 4' X 6' () 3' DOOR () 2' DOOR () 1' DOOR () OTHER. SELF-EVAPORATING. DIRECT WIRED. INSTALLED BY G.C. NSF APPROVED.



2 DIMENSION PLAN
SCALE 1/4"=1'-0"

REMODEL

GENERAL NOTES:

- CEILING HEIGHT IS 10'.
- ELECTRICAL OUTLET HEIGHTS MEASURED TO BOTTOM OF BOX.
- ONE ELECTRICAL JUNCTION BOX TO BE LOCATED IN CEILING ABOVE EACH WINDOW.
- STORE DESIGNED WITH COLORCOURT SEATING. SHOWN ON PLAN AS SINGLES NOT GROUPS.
- CUNO MODEL SW3-PLUS WATER FILTRATION SYSTEM IS REQUIRED IN ALL NEW STORES THAT DISPENSE BEVERAGES. THE RECOMMENDED PLACEMENT FOR INSTALLATION IS MOUNTED TO SODA SYRUP RACK BY COCA-COLA. SECONDARY PLACEMENT OPTION IS MOUNTED ON THE BACKROOM WALL. THIRD INSTALLATION OPTION IS MOUNTING INSIDE THE FRONT BEVERAGE COUNTER WHEN SPACE LIMITATIONS OCCUR. REQUIRED: 1/2" INCOMING WATER LINE FEED WITH 1/2" BALL VALVE SHUTOFF AND 1/2" FPT CONNECTION.
- MINIMUM 110 VOLT, 20 AMP ELECTRICAL SERVICE TO SUPPORT THE CARBONATOR AND WATER BOOSTER (MUST BE DEDICATED CIRCUIT).
- SMARTCURVE STAND (MFR. DISPLAY-BOX) REQUIRED IN CUSTOMER AREA AT POINT OF ORDER (PREFERRED PLACEMENT).
- 21 3/4" X 13 1/8" BASE, 56" (WITHOUT HEADER) OVERALL HEIGHT.
- SECONDARY CHIP RACK IS REQUIRED IN THE CUSTOMER AREA. THE TWO AVAILABLE OPTIONS ARE: BASKET STYLE CHIP RACK AT THE POINT OF ORDER (PREFERRED PLACEMENT) OR PURSE RAIL MOUNTED CHIP RACK. (MOUNTED ON TOP OF THE PURSE RAIL.)
- EXIT LIGHTS INSTALLED BY G.C. PER LOCAL CODE.
- EMERGENCY LIGHTS INSTALLED BY G.C. PER LOCAL CODE.
- EXTINGUISHERS, SMOKE AND FIRE DETECTION SYSTEMS INSTALLED BY G.C. PER LOCAL CODE.
- LABOR & MATERIAL SUPPLIED BY G.C. UNLESS OTHERWISE SPECIFIED.
- ALL DIMENSIONS TO BE VERIFIED BY G.C. ON SITE.
- DECOR SPECIFICATIONS ARE TO BE SUBWAY'S "TUSCANY II" SCHEME.
- EXISTING FLOOR FINISH TO BE UTILIZED.

REVISION:	BY	DATE

STORE MUST BE CONSTRUCTED AS DESIGNED IN THESE FLOOR PLANS. SUBJECT TO FEDERAL, STATE AND LOCAL LAWS. RECIPIENT IS RESPONSIBLE FOR ENSURING COMPLIANCE WITH ALL LAWS. IF MODIFICATIONS ARE NECESSARY, PLEASE CONTACT THE FWH STORE DESIGN DEPARTMENT FOR WRITTEN APPROVAL OF THE REQUIRED CHANGES.

THIS DRAWING IS FURNISHED BY FWH ON BEHALF OF DOCTORS ASSOCIATES INC. (DOA) DBA SUBWAY. RECIPIENT MUST DETERMINE IF THIS DRAWING MUST BE SUBMITTED TO A LICENSED ARCHITECT OR SIMILAR PROFESSIONAL UNDER FEDERAL, STATE OR LOCAL LAW. ANY CHANGES MUST BE APPROVED BY DOA.

DO NOT SCALE DRAWING. WRITTEN DIMENSIONS TAKE PRECEDENCE OVER SCALED DIMENSIONS. AND SHALL BE VERIFIED IN THE FIELD BY THE GENERAL CONTRACTOR AND/OR FRANCHISEE/OWNER. ANY DISCREPANCY IN DIMENSIONS SHALL BE BROUGHT TO THE IMMEDIATE ATTENTION OF DOA AREA DEVELOPMENT AGENT OR DESIGNATED FIELD REPRESENTATIVE.

THE GENERAL CONTRACTOR AND EACH SUBCONTRACTOR SHALL MAKE HIS OWN INSPECTIONS AND MEASUREMENTS. FWH AND DOA SHALL NOT BE HELD RESPONSIBLE FOR THE ACCURACY OF DIMENSIONS AND FOR ERRORS AND OMISSIONS IN THE DRAWINGS IF WRITTEN CONFIRMATION HAS NOT BEEN RECEIVED BY THE FWH STORE DESIGN DEPARTMENT.

THIS DRAWING AND THE INFORMATIONAL CONTENT HERE OF IS THE CONFIDENTIAL PROPERTY OF DOA AND IS PROVIDED SOLELY FOR THE USE OF AUTHORIZED FRANCHISEES, THEIR AGENTS AND CONTRACTORS. RECIPIENT AGREES NOT TO REPRODUCE, COPY, USE OR TRANSMIT THIS DRAWING AND/OR ITS INFORMATIONAL CONTENT, IN WHOLE OR IN PART, OR TO ALLOW SUCH ACTION BY OTHERS, FOR ANY PURPOSE, EXCEPT WITH THE WRITTEN PERMISSION OF DOA OR FWH ACTING ON BEHALF OF DOA. RECIPIENT FURTHER AGREES TO SUPPLEMENT THIS DRAWING AND ANY PERMITTED COPIES HEREOF UPON DEMAND.

WORLD HEADQUARTERS

325 BIC DRIVE
MILFORD, CT 06461

(203) 877-4281
(800) 888-4848

LOCATION:

STORE #13478

3939 CRENSHAW BLVD.

LOS ANGELES, CA

FRANCHISEE:

RAGHU, ROHIT

RAVI MARWAHA

DEVELOPMENT AGENT:

HARDI GREWAL

DATE:

JANUARY 15, 2010

DESIGNED BY:

BETH TABRIZ

DRAWN BY:

BT

REVIEWED BY:

DSF

SCALE: 1/4" = 1'-0"

SHEET #:

1 OF 2

PRINTED 1/13/2011