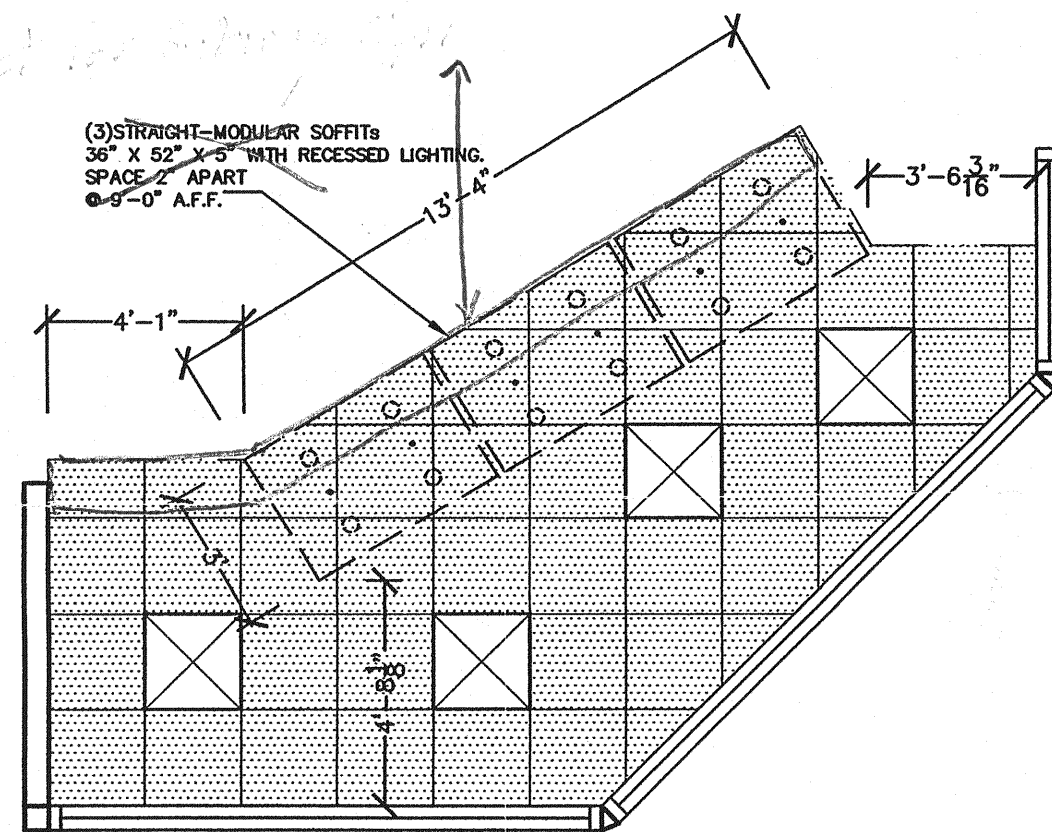
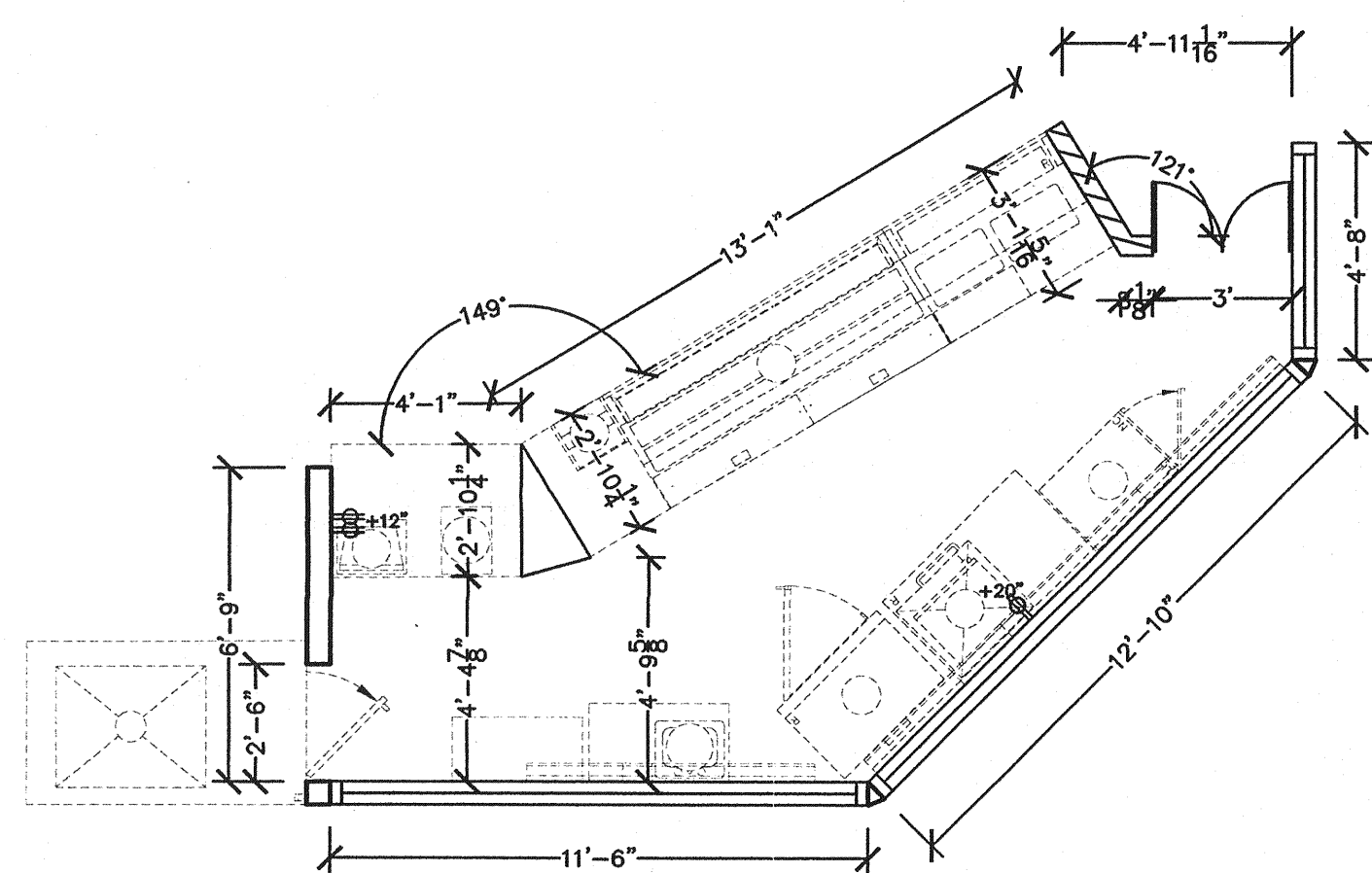


1 FURNITURE AND EQUIPMENT PLAN
SCALE: 1/4" = 1'



2 REFLECTED CEILING AND LIGHTING PLAN
SCALE: 1/4" = 1'



3 ELECTRIC AND DIMENSION PLAN
SCALE: 1/4" = 1'

FURNITURE AND EQUIPMENT LEGEND

#	ITEM	MANUFACTURER	ORDERED FROM	QTY.	DESCRIPTION
SERVICE AREA					
11	SUBWAY "OPEN" WINDOW SIGN	MYSTIGLO	DAI	X	SEE MANUFACTURER FOR SPECS. 120V. INSTALLED BY G.C.
19	FRONT COUNTER	DUKE MANUFACTURING	DAI	1	TOTAL LENGTH 17'-2" () LH (X) RH 25" HOT FOOD UNIT (1) 60" COLD PAN UNIT (1) 48" COLD PAN UNIT .49" CASH UNIT. N/A HOT FOOD EXTENSION 24" CASH EXTENSION N/A BEVERAGE EXTENSION. INSTALLED BY G.C. ULS APPROVED. ELECTRICAL CONNECTIONS AND WIRING TO LOCAL AND STATE CODE REQUIREMENTS AS DETERMINED BY G.C. OR ELECTRICIAN.
21	COOKIE DISPLAY CASE	ADVANCED DISPLAYS IN PLASTICS, INC.	DAI	1	DISPLAY CASE ON TOP OF SUB-WRAP AND NAPKIN RISER. MADE OF CLEAR ACRYLIC.
23	SAFE	C.S.S./TIDEL	DAI	X	() TIME LOCK (X) QUICK DROP () TIDEL TACC. INSTALLED BY G.C. IN SERVICE AREA.
24	SUBSHOP 2000 P.C.S.	MICROS SYSTEMS/HELL/SUBTOTAL/PC-POS	DAI	X	PC BASED POINT OF SALE SYSTEM. REQUIRES DEDICATED POWER SOURCE WITH ISOLATED GROUND TO BREAKER.
28A	COMBI BREAD CABINET	LOCKWOOD/NU-VU	DAI	X	() LOCKWOOD (X) NU-VU () RH (X) LH COMBINATION CABINET. INTEGRATED OPEN AIR COOLING RACK ABOVE WITH ENCLOSED CABINET BELOW. INSTALLED BY G.C.
30	COUNTER ENTRANCE	PLYMOLD/DUKE MFG.	DAI	X	SELF-CLOSING, PREFRAMED & PREFINISHED OR SEE BACK-UP SHEETS FOR CONSTRUCTION SPECS. FONT HILL PEAR LAMINATE FINISH. INSTALLED BY G.C.
33	REFRIGERATED BACK COUNTER	DUKE MANUFACTURING	DAI	1	(X) 48" LENGTH. () 60" LENGTH. BACK COUNTER WITH UNDER-COUNTER REFRIGERATOR. STAINLESS STEEL TOP. FONT HILL PEAR LAMINATE FINISH. INSTALLED BY G.C.

CEILING & LIGHTING LEGEND

2' X 2' DROP CEILING WITH WHITE SPLINES.
OPTIONAL PAINTED CEILING TILE AND SPLINE COLORS (SPLINES MUST BE PAINTED THE SAME COLOR AS TILES):
BLONDE PAINT (SHERWIN WILLIAMS #SW 6128) *CUSTOMER AREA ONLY*
WHEAT GRASS PAINT (SHERWIN WILLIAMS #SW 6408) *CUSTOMER AREA ONLY*

SYMBOL	DESCRIPTION	MANUF.	SUPPLY	ORDERED FROM	NO.	NOTES:
	2'X2' RECESSED FLUORESCENT FIXTURE	LIGHTOLIER	SPECIALTY LIGHTING GROUP	DAI	4	RECESSED FLUORESCENT FIXTURE (SPS2GSA2FT120SB). USES (2) PL-L25W/835 2G11 LIGHT BULBS.
	VINYL DROP-IN		G.C.	G.C.	AS REQD.	2' X 2' DROP-IN PANEL
	STRAIGHT - MODULAR SOFFIT	TPC GROUP	TPC GROUP	DAI	3	36" X 52" X 5" STRAIGHT MODULAR SOFFIT. COLOR FINISH: FONT HILL PEAR LAMINATE (WILSONART #10745-60) LIGHTING: (4) 120V PRE-WIRED PLUG IN RECESSED 3 WATT LED LIGHT FIXTURES WITH CHROME EXTERIOR RINGS. INSTALLATION MOUNTING HARDWARE, PRE-ATTACHED AT FACTORY AND CONNECTED TO FRAMING STRUCTURE WITH 3/8" THREADED CONNECTING ROD.

TUSCANY II DECOR CALCULATIONS

NOTE: THE SUBWAY STORE DESIGN DEPARTMENT WILL NOT ACCEPT RESPONSIBILITY FOR ANY INACCURACIES. THE CALCULATIONS PROVIDED BELOW MUST BE VERIFIED BY THE G.C. AND FRANCHISE OWNER BEFORE ANY ORDER FOR THESE MATERIALS IS ACCEPTED AND PLACED.

QUANTITIES	CALCULATION WORKSHEET
1) 4' X 12' SHEETS FONT-HILL PEAR LAMINATE*	1) FP/L + 5% DIVIDED BY 12
2) 12' T-MOLDING STRIPS *	2) (FP/L ON 36" HIGH WALLS X 2) + (FP/L ON 48" HIGH WALLS X 3) + 5% DIVIDED BY 12
3) 12' T-MOLDING STRIPS *	3) CEILING HEIGHT X 5/7 + 5% DIVIDED BY 12
4) 12' T-MOLDING STRIPS *	4) CEILING HEIGHT X QT/WC + 5% DIVIDED BY 12
5) 12' T-MOLDING STRIPS *	6) TOTAL LENGTH OF CUSTOMER SIDE OF HEADERWALL(S) OVER SERVICE AREA + 5%
6) 12' T-MOLDING STRIPS *	
7) 12' T-MOLDING STRIPS *	

* CALCULATIONS ARE FOR FONT-HILL PEAR LAMINATE AND ALUMINUM T-MOLDING APPLIED TO 36" AND 48" HIGH WALLS. LAMINATE AND T-MOLDING, WHEN AFFIXED DIRECTLY TO DUKE FRONT COUNTER, IS SHIPPED READY TO INSTALL BY DUKE MANUFACTURING.

NOTE: THESE CALCULATIONS DO NOT INCLUDE THE MATERIALS NEEDED TO DECOR THE AREA ABOVE OR BELOW THE WINDOWS.

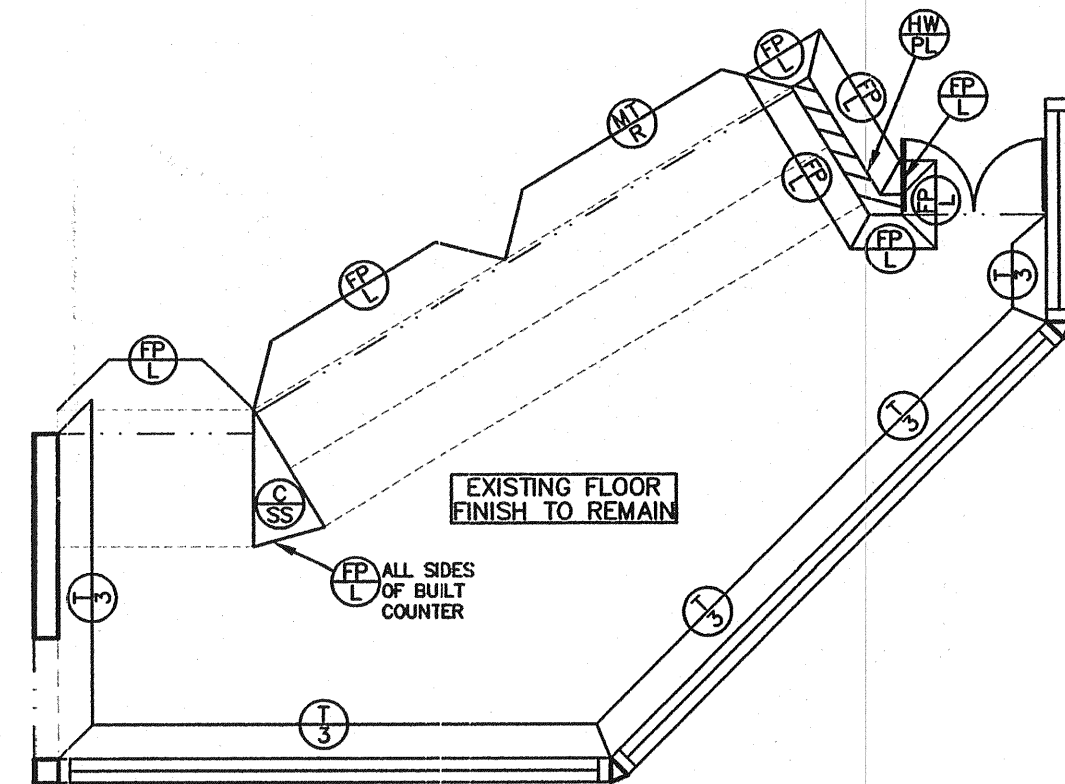
WALL FINISH LEGEND (TUSCANY II DECOR)

*SEE TUSCANY II BACK-UP SHEET 1 OF 4 AND 2 OF 4 FOR PROPER INSTALLATION OF WALLFINISHES IN CUSTOMER AND SERVICE AREAS. (SEE TUSCANY SUPPLEMENTAL TILE BACK-UP SHEET WHEN APPLICABLE)

SYMBOL	DESCRIPTION	MANUFACTURER	SUPPLY	INST.	NOTES:
	CABINET/WALL LAMINATE	WILSONART	G.C.	G.C.	FONT-HILL PEAR (#10745-60) - INSTALL GRAIN HORIZONTALLY
	MOSAIC TILE (RIGHT)	VACUFORM/WILSONART	D.A.I.	G.C.	GRAPHIC IMAGES (SEE TUSCANY II BACK-UP SHEET FOR DETAILS AND OPTIONS) WITH WILSONART #10745-60 FONT HILL PEAR BORDER AND 4" LIGHTED PURSE RAIL.
	WALL CAPS	G.C.	G.C.	G.C.	HARDWOOD PLANK (STAINED MINWAX #235 CHERRY AND POLYURETHANED WITH MINWAX FAST DRYING CLEAR SATIN)
	COUNTER TOP	LOCAL	G.C.	G.C.	STAINLESS STEEL (SOURCED LOCALLY)
	GRIMALDI CERAMIC TILE RESTROOM/SERVICE AREAS	ASSOCIATED ACC/INTERNATIONAL LTD.	G.C.	G.C.	8" X 8" CERAMIC TILE. COLOR: CURRY (YELLOW). ITEM# C212005061. 8" X 8" CERAMIC TILE. COLOR: MUSGO (GREEN). ITEM# C212005051. GROUT COLOR: #17 BUTTER CREAM NON SANDED.

NOTE: ALL WOOD INTERIOR DOORS, UPPER & LOWER MOLDING & CROWN MOLDING TO BE STAINED W/ MINWAX #235 CHERRY AND POLYURETHANED W/ MINWAX FAST DRYING CLEAR SATIN.

NOTE: PREFINISHED AND PREFRAMED COUNTER ENTRANCE IS AVAILABLE THROUGH PLYMOLD OR GLUE 2 PIECES OF 5/8" PARTICLE BOARD TOGETHER. SEE TUSCANY II BACK-UP SHEET #1 FOR FINISH OPTIONS.



4 WALL FINISH PLAN
SCALE: 1/4" = 1'

SYMBOL LEGEND	
	120V DUPLEX OUTLET
	220V SINGLE OUTLET
	PHONE JACK
	JUNCTION BOX
	THERMOSTAT
	ELECTRIC PANEL
	F.M. - FLOOR MOUNTED
	C.M. - CEILING MOUNTED
	FLOOR DRAIN
	FLOOR SINK

REMODEL (T-1 TO T-2)

GENERAL NOTES:

- CEILING HEIGHT IS 10'-0"
- ELECTRICAL OUTLET HEIGHTS MEASURED TO BOTTOM OF BOX.
- ONE ELECTRICAL JUNCTION BOX TO BE LOCATED IN CEILING ABOVE EACH WINDOW.
- CARBONATOR AND WATER BOOSTER (MUST BE DEDICATED CIRCUIT).
- SMARTCURVE STAND (MFR. DISPLAY-BOX) REQUIRED IN CUSTOMER AREA AT POINT OF ORDER (PREFERRED PLACEMENT).
- 21 3/4" X 13 1/8" BASE, 56" (WITHOUT HEADER) OVERALL HEIGHT.
- SECONDARY CHIP RACK IS REQUIRED IN THE CUSTOMER AREA. THE TWO AVAILABLE OPTIONS ARE: BASKET STYLE CHIP RACK AT THE POINT OF ORDER (PREFERRED PLACEMENT) OR PURSE RAIL MOUNTED CHIP RACK. (MOUNTED ON TOP OF THE PURSE RAIL.)
- EXIT LIGHTS INSTALLED BY G.C. PER LOCAL CODE.
- EMERGENCY LIGHTS INSTALLED BY G.C. PER LOCAL CODE.
- EXTINGUISHERS, SMOKE AND FIRE DETECTION SYSTEMS INSTALLED BY G.C. PER LOCAL CODE.
- LABOR & MATERIAL SUPPLIED BY G.C. UNLESS OTHERWISE NOTED.
- ALL DIMENSIONS TO BE VERIFIED BY G.C. ON SITE.
- DECOR SPECIFICATIONS ARE TO BE SUBWAY'S "TUSCANY II" SCHEME.

REVISION:	BY:	DATE:

STORE MUST BE CONSTRUCTED AS DESIGNED IN THESE FLOOR PLANS SUBJECT TO FEDERAL, STATE AND LOCAL LAWS. RECIPIENT IS RESPONSIBLE FOR ENSURING COMPLIANCE WITH ALL LAWS. IF MODIFICATIONS ARE NECESSARY, PLEASE CONTACT THE FWH STORE DESIGN DEPARTMENT FOR WRITTEN APPROVAL OF THE REQUIRED CHANGES.

THIS DRAWING IS FURNISHED BY FWH ON BEHALF OF DOCTORS ASSOCIATES INC. (DAI) DUBA SUBWAY. RECIPIENT MUST DETERMINE IF THIS DRAWING MUST BE SUBMITTED TO A LICENSED ARCHITECT OR ENGINEER PROFESSIONAL UNDER FEDERAL, STATE OR LOCAL LAW. ANY CHANGES MUST BE APPROVED BY DAI.

DO NOT SCALE DRAWING. WRITTEN DIMENSIONS TAKE PRECEDENCE OVER SCALED DIMENSIONS. ANY DISCREPANCY IN DIMENSIONS SHALL BE BROUGHT TO THE IMMEDIATE ATTENTION OF DAI'S AREA DEVELOPMENT AGENT OR DESIGNATED FIELD REPRESENTATIVE.

THE GENERAL CONTRACTOR AND EACH SUB-CONTRACTOR SHALL MAKE HIS OWN INSPECTIONS AND MEASUREMENTS. FWH AND DAI SHALL NOT BE HELD RESPONSIBLE FOR THE ACCURACY OF DIMENSIONS AND FOR ERRORS AND OMISSIONS IN THE DRAWINGS. FWH'S CONTRIBUTION HAD NOT BEEN RECEIVED BY THE FWH STORE DESIGN DEPARTMENT.

THIS DRAWING AND THE INFORMATIONAL CONTENT HERE OF IS THE CONFIDENTIAL PROPERTY OF FWH AND IS PROVIDED SOLELY FOR THE USE OF AUTHORIZED FRANCHISEES, THEIR AGENTS AND CONTRACTORS. RECIPIENT AGREES NOT TO REPRODUCE, COPY, USE OR TRANSMIT THIS DRAWING AND/OR INFORMATIONAL CONTENT IN WHOLE OR IN PART, OR TO ALLOW SUCH ACTION BY OTHERS, FOR ANY PURPOSE, EXCEPT WITH THE WRITTEN PERMISSION OF DAI OR FWH ACTING ON BEHALF OF DAI. RECIPIENT FURTHER AGREES TO SURRENDER THIS DRAWING AND ANY RELATED COPIES HEREOF UPON DEMAND.

SUBWAY
WORLD HEADQUARTERS
325 BIC DRIVE
MILFORD, CT 06461
(203) 877-4281
(800) 888-4848

LOCATION:
STORE # 15968
18910 CRENSHAW BLVD.
TORRANCE, CA 90504

FRANCHISEE:
MARWAHA
DEVELOPMENT AGENT:
GREWAL

DATE:
DECEMBER 16, 2010
DESIGNED BY:
KATHERINE MILLER
DRAWN BY:
KTM
REVIEWED BY:
BWB
SCALE: 1/4" = 1'-0"

SHEET #:
1 OF 1
PRINTED 1/13/2011
©2010 DOCTORS ASSOCIATES, INC.